

2020 Initiatives Proposal Form

Thank you for your interest in submitting a proposal to the 2020 Initiatives process.

Please complete this form, save it to your hard drive, then email a copy to W

Wojcik, W. • }% Ç Ç}μœ v l]œ š}œ }v šZ u]oX

Strategic Theme (choose one)	
	Learning
	Engagement
	Global Perspectives
	Sustainability

Strategic Objectives: choose one primary (P) in main theme and up to three secondary (S) In any themes	
Learning	
Deliver high value-added learning experiences and promote scholarly activity (S1)	Reward scholarly applications (ER2)

Promote liberal arts ideal to devl-nTc 10t d32 113n 674.ev-24.3(ot)-8.1(e)-7.9ealor

The tables below allow for summaries of about 350 words. Additional information can be included as an attachment.

Narrative Summary of Project

Assessment Plan: What are your anticipated outcomes and specific measurements for success?

Budget Summary

Item	FY201 July 1, 201 – June 30, 201	FY201 July 1, 201 – June 30, 201	FY201 July 1, 201 – June 30, 201	Notes/Comments (stipends, supplies, hospitality, etc.)
1.				
2.				
3.				
4.				
5.				
6.				

Student Spaceflight Experiments Program Learning Community

Jason Shulman, Pamela Cohn, Tara Harmer Luke, Norma Boakes, Melissa Zwick and Peter Straub

Stockton has been accepted as a community member for the Mission 11 of the Student Spaceflight Experiments Program (SSEP) which is sponsored by the National Aeronautics and Space Administration (NASA).

assist with dissemination of the SSEP message across social media platforms and to assist publicizing events.

Participating districts and schools include:

Hamilton Township School District (2): William Davies Middle School, George Hess Elementary Complex.

Toms River Regional School District (18): High School East, High School North, High School South, Intermediate East, Intermediate North, Intermediate South, Beachwood Elementary, Cedar Gove Elementary, Citta Elementary, East Dover Elementary, Hooper Ave Elementary, North Dover Elementary, Pine Beach Elementary, Silver Bay Elementary, South Toms River Elementary, Walnut Street Elementary, Washington Street Elementary, West Dover Elementary.

Greater Egg Harbor Regional High School District (3): Oakcrest High School, Absegami High School, Cedar Creek High School.

Atlantic City School District (11): Atlantic City High School, Brighton Ave School, Chelsea Heights School, Dr. Martin Luther King School, New York Ave School, Pennsylvania Ave School, Richmond Ave. School, Sovereign Ave. School, Texas Ave. School, Uptown School Complex, Venice Park School

In addition to the scientific competition as part of the learning community activities we would like to send a team to the launch experiment Cape Canaveral in Florida in June 2017 (presently scheduled for 6/15/17) the NASA museum at the Kennedy Space Center, Cape Canaveral, FL. At the museum and the Cape Launch site we intend to produce short podcasts featuring the SSEP students and their involvement in research to be distributed via social media to Stockton and the participating community. The launch team will consist of 6-10 students and 3 faculty depending on available funds. Students will be selected based on their participation in the project giving precedence to the proposal grantee's commitment to a balanced and diverse team. We would also like to identify at least three places on the launch trip to represent the Stockton and K-12 Partner students who participated in the STEAM mission patch competition, the COMM intern and an observer nominated by the Stockton Student Senate. Given that some Stockton students and in particular 12-year-olds may be minors we will follow all regulations for the protection of minors for this experience. Funds are requested for approximately 1/2 the cost of the student launch travel costs (\$3000 request) with the other 1/2 being fundraised. WKURXJK D 6WRFNWRQ 3(OHYDWH' S NAMS website. A promotional video is currently being produced to assist with this effort. The most convenient travel would be to fly on Spirit Airlines from Atlantic City to Orlando and then drive the 43 miles to the Cape. As the launch is weather dependent, a window of four days



Stockton University-Student Spaceflight Experiments Program, Mission 11 Student Mission Patch Competition

To support the Stockton University Student Spaceflight Experiments Program (SSEP), Mission 11, a patch design competition will be held at two levels. One will be at the University level and the second at the K level in the local school district.

Mission patches have been an essential cultural element of human spaceflight since the inception of the Mercury program by NASA in the 1960s (http://history.nasa.gov/mission_patches). The mission patch in the US space program has its roots in the patches that soldiers, sailors, marines and air force personnel developed (and drew themselves) to promote pride and esprit de corps in their units (http://bluejacket.com/usn_avi_insig_history). These in turn are believed to have been influenced by heraldic badges worn during the days of knights in armor. In keeping with this tradition the SSEP (<http://ssep.ncesse.org>) has invited each new onboarding community to hold a competition to design and fly their own mission patch which reflects the unique characteristics of that community. Mission patches for the previous SSEP mission can be seen here (<http://ssep.ncesse.org/communities/patches>) and below. The mission patch designs selected, one from each level, will also be flown to the International Space Station (http://www.nasa.gov/mission_pages/station/main/) on the SpaceX Dragon capsule/Falcon 9 rocket (<http://www.spacex.com>) along with the student experiments of Mission 11 and returned with the experiments upon completion of the flight operations. These flight patch designs will be mounted and displayed at the home institutions. The winning mission patch designs will be fabricated into embroidered patches to commemorate participation in the project.

Competition opens September 2016.

Competition closes December 2016

Winners will be announced in January 2017

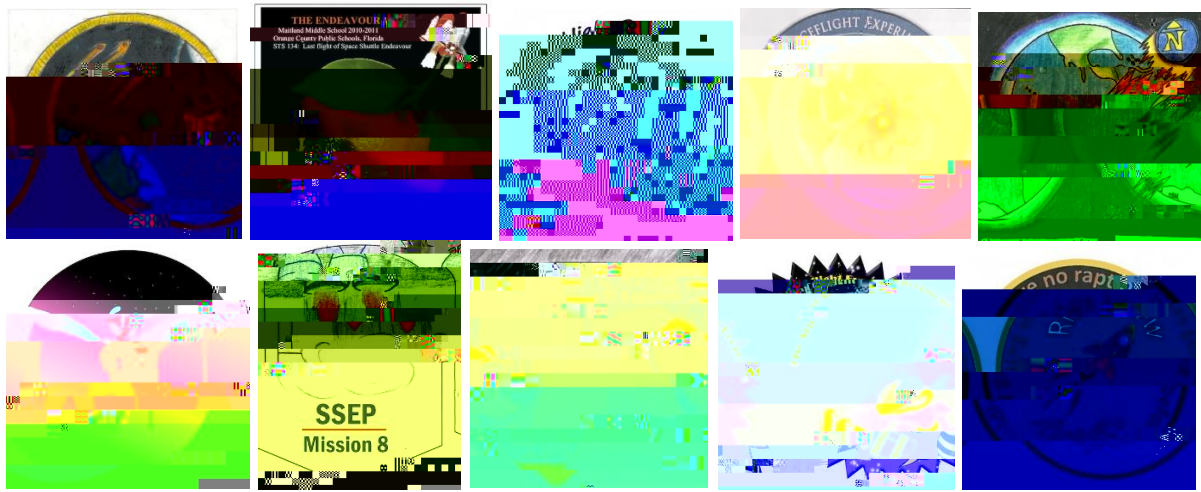
Mission 11 is expected to fly to the ISS from Cape Canaveral, Florida, in 2017 and return 6-8 weeks later.

Requirements:

1. A Mission Patch must be a piece of paper **NO LARGER** than 3.5 inch x 3.5 inch and its design should reflect pride in your community, and your participation in the SSEP.
2. There is no restriction on the type of paper or the ink. **But to fly, it must be paper not card stock or cardboard. Patches submitted on card stock or cardboard will be (and have been) rejected.**
3. A Mission Patch can be black & white or full color.

4. A Mission Patch can only be composed of a single sheet of 8.5x11 inch paper and the ink on the paper.
5. A Mission Patch cannot include multiple layers of paper glued or taped on top of one another.
6. Please include your full contact information including school, and class or grade.
7. Patch designs should be submitted to:

SSEP Program Patch Design
 C/o School of Natural Sciences and Mathematics
 USC-240
 101 Vera King Farris Dr.
 Stockton University
 Galloway, NJ 08204



Representative SSEP mission patches.